

Intelligent Video surveillance Software

IP Network camera surveillance

Feature:

- ▶ **Viewing**- Displays images from the chosen cameras
- ▶ **Recording**- Records the images by all the time
- ▶ **Playback**- Browse the recordings
- ▶ **Control PTZ function**- Controls the Pan/Tilt/Zoom
- ▶ **Channel Tree**- Easy Add/remove camera
- ▶ **Schedule Recording**- specify recording time
- ▶ **Channel Tree**- Easy to control
- ▶ **Audio**- Individual channel audio monitoring and recording

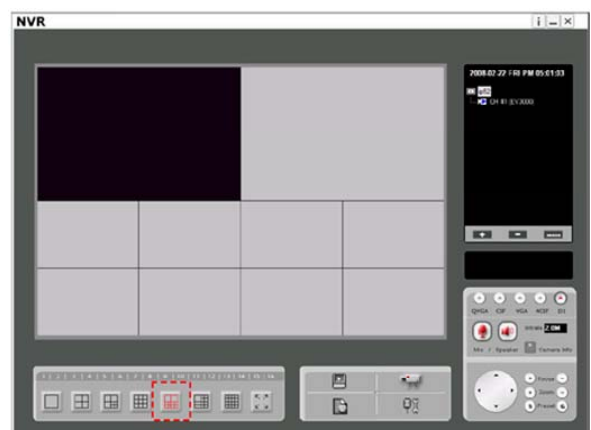


Function :

Viewing

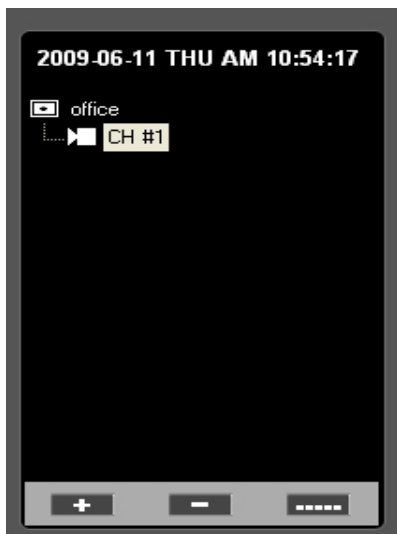
Single View and multi View: Full screen/ 1/4/7/9/10/13/16

- ▶ 16 channel multi view capability with quick access buttons
- ▶ Adjustable Quality for each channel
- ▶ Easy reach PTZ controls
- ▶ One click Playback, Scheduler
- ▶ Instant " search & add " capability
- ▶ Full screen for selected channel/all channels



Channel Tree

Add/remove and configure individual nodes



Playback

- ▶ 4 channel simultaneous playback.
- ▶ Day-Time quick selection panel
- ▶ Smart search for events (Motion, Digital in)
- ▶ Save Video clip / Image
- ▶ Playback configuration settings.

Erase recording – settings

Event Handling

- ▶ General Motion
- ▶ D/I based Event handling
- ▶ System Event
- ▶ Dynamic Action Insertion into specific channels

Configuration

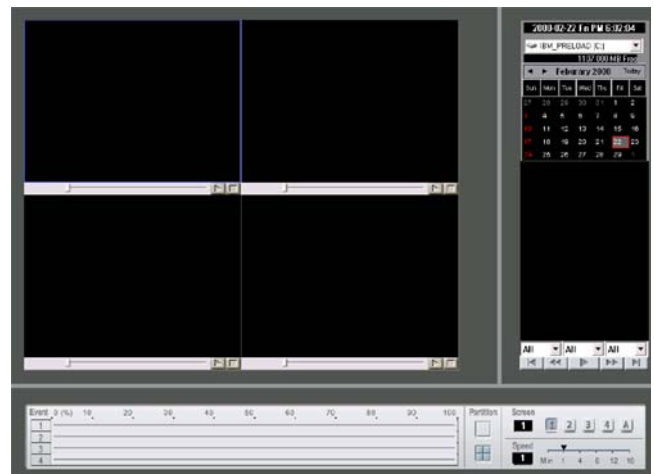
- ▶ Camera List based individual settings, name.
- ▶ Digital I/O settings for each device

Recording

- ▶ 16 channel recording at D1 resolution
- ▶ Scheduled (Time-date/week) recording
- ▶ Event triggered recording.
- ▶ Independent schedule for each channel
- ▶ Recording path configuration

Event Handling

- ▶ General Motion
- ▶ D/I based Event handling
- ▶ System Event
- ▶ Dynamic Action Insertion into specific channels



Minimum System Requirement

- CPU : P4 2.0G or above
- RAM : 1GB
- Ethernet Card: Ethernet 100Mbps or above
- OS: WINDOWS 2000 / XP
- DirectX: 9.0 or above

